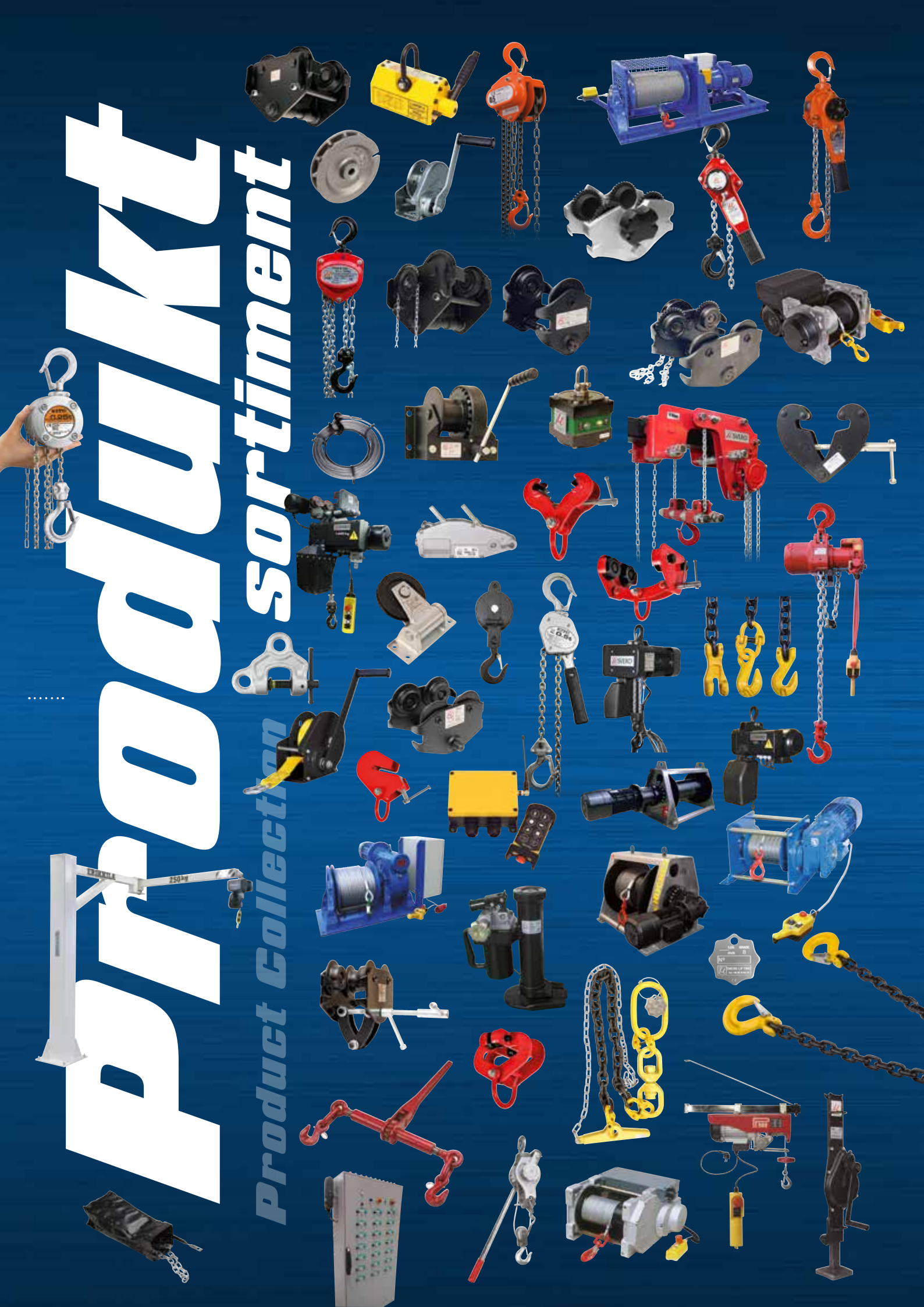


# PRODUKT

## Product Collection Sortiment



# Balkklämmor

## Beam Clamps

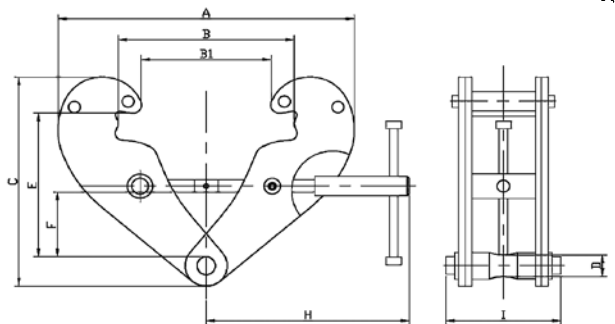


”Låg bygghöjd genom inbyggd bärbygel”

### Balkklämma/Beam Clamp – 50

1000, 2000, 3000, 5000, 10 000 kg

- Lätt och säkert montage
- Låg bygghöjd genom inbyggd bärbygel
- Fast, säkert grepp om bakflänsen, både vertikalt och horisontellt
- Används som fästpunkt för lyftblock, teltrar, dragapparater m.m.
- Egna tillverknings nr och provbelastade
- Test och CE-certifikat medföljer
- Easy and safe fitting
- Low headroom design as the support bolt is built-in
- Sturdy and secure grip on the beam flange, vertically as well as horizontally
- Frequently used as fix point for lifting blocks, electric hoists, pulling equipment etc
- Marked with its own manufacturing number and load tested
- Test and CE-certificate enclosed



49

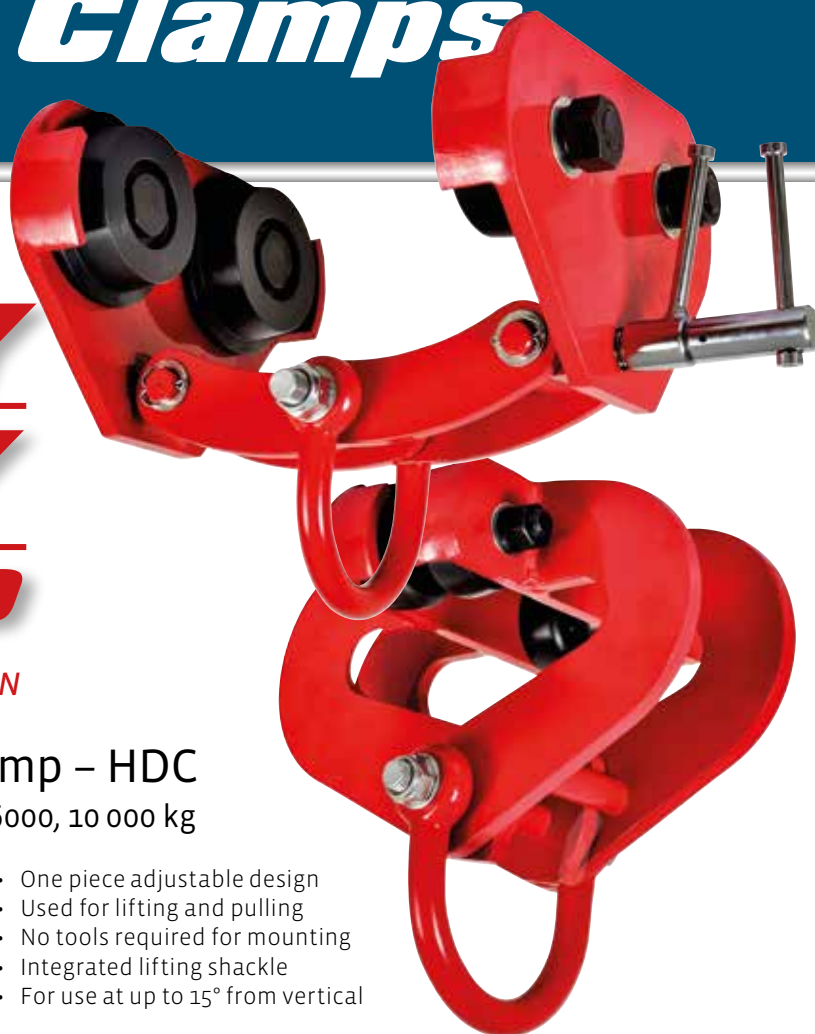


BALKKLÄMMA/BEAM CLAMP - 50

Model		5014	5016	5017	5019	5023
WLL	(kg)	1000	2000	3000	5000	10 000
Weight	(kg)	3,5	4,5	9,5	11,0	16,0
A min-max	(mm)	80-240	80-240	90-330	90-330	90-350
B1 min-max	(mm)	218-270	218-270	310-355	310-355	330-364
C min	(mm)	158	158	210	210	240
D	(mm)	20	20	22	28	38
E min-max	(mm)	90-144	90-144	137-208	134-205	146-220
F min	(mm)	22	22	46	43	51
H	(mm)	198	198	263	263	285
I	(mm)	94	102	132	142	180

# Balkklämmor Beam Clamps

## HEAVY DUTY CLAMP COLLECTION

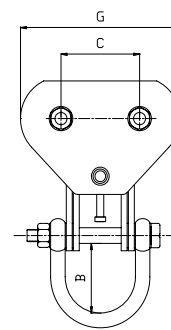
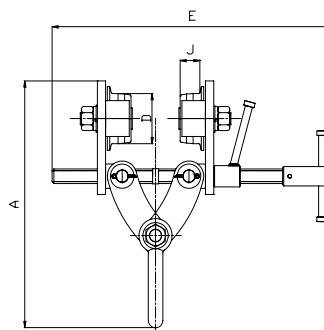
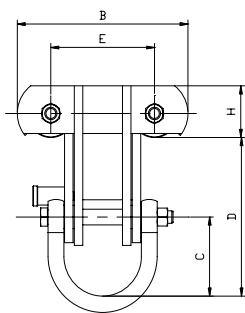
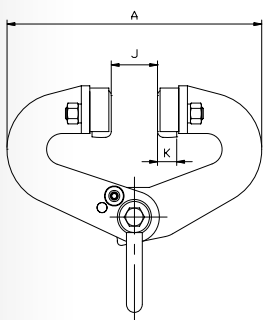


### Balkklämma/Beam Clamp – HDC

500, 1000, 1500, 3000, 4000, 5000, 6000, 10 000 kg

- Justerbar och enkel montering
- För lyft eller drag
- Inga verktyg behövs för montering
- Komplet med lyftschackel
- Kan användas upp till 15° från centrum
- One piece adjustable design
- Used for lifting and pulling
- No tools required for mounting
- Integrated lifting shackle
- For use at up to 15° from vertical

50  
.....



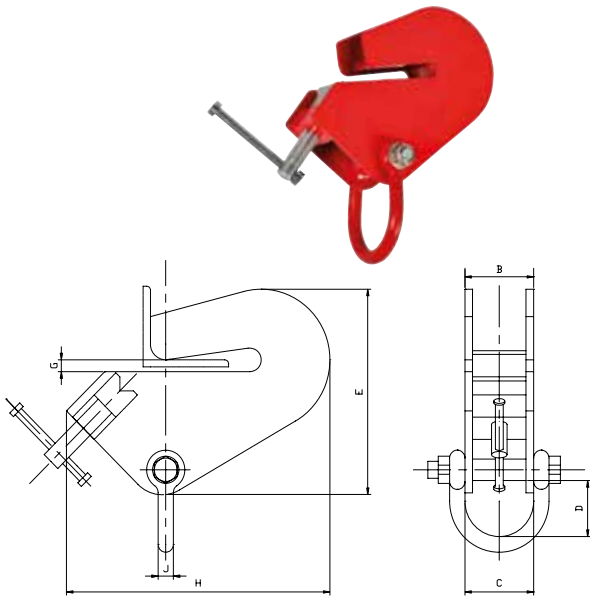
BALKKLÄMMA / BEAM CLAMP - Model 1HDC Typ A  
På hjul, självlåsand / On wheels, Auto lock

Model 1HDC		3000A	6000A	10 000A
WLL	(kg)	3000	6000	10 000
Load test	(kg)	4500	9000	15 000
Weight	(kg)	21,0	32,0	54,0
Jaw Opening	(mm)	76-230	100-305	120-305
A	(mm)	380	500	600
B	(mm)	280	296	310
C	(mm)	126	126	131
D	(mm)	253	290	290
E	(mm)	170	170	170
H	(mm)	82	88	113
J	(mm)	25	30	44
K	(mm)	32	38	43

BALKKLÄMMA/BEAM CLAMP - Model 1HDC Typ B  
På hjul, justerbar / On wheels, Adjustable

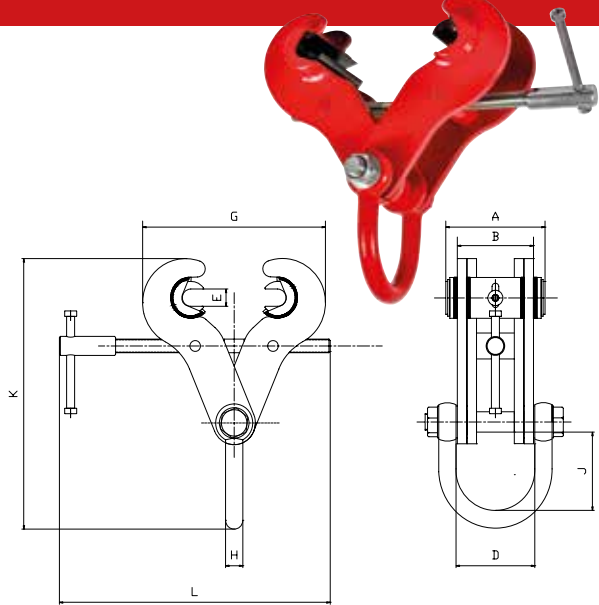
Model 1HDC		3000B	6000B	10 000B
WLL	(kg)	3000	6000	10 000
Load test	(kg)	4500	9000	15 000
Weight	(kg)	25,0	52,0	74,0
Jaw Opening	(mm)	76-203	105-305	160-305
A min	(mm)	381	429	541
B	(mm)	113	100	110
C	(mm)	133	176	200
D	(mm)	82,5	125	145
E	(mm)	475	560	630
G	(mm)	270	356	430
J	(mm)	33	34	41

HEAVY DUTY CLAMP



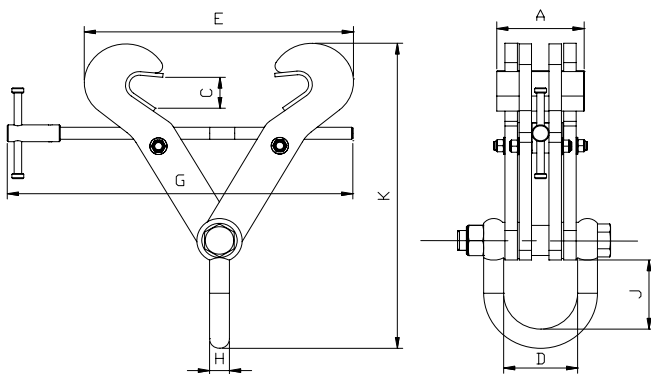
BALKKLÄMMA / BEAM CLAMP - Model 1HDC Typ AC  
För Vinkeljärn / Angle Section

Model 1HDC		500AC	1000AC	1500AC	3000AC
WLL	(kg)	500	1000	1500	3000
Load test	(kg)	750	1500	2250	4500
Weight	(kg)	4,0	4,5	11,0	21,5
Beam width	(mm)	38-101	38-101	50-152	101-203
B	(mm)	69	69	99	99
C	(mm)	70	70	107	107
D	(mm)	96	96	98	98
E	(mm)	206	206	270	343
G	(mm)	15	15	19	25,4
H	(mm)	258	258	346	490
J	(mm)	16	16	20	20



BALKKLÄMMA / BEAM CLAMP - Model 1HDC Typ SR  
Rörlig Gripklo / Swivel Jaw

Model 1HDC		3000SR	4000SR	5000SR	10 000SR
WLL	(kg)	3000	4000	5000	10 000
Load test	(kg)	4500	6000	7500	15 000
Weight	(kg)	10,0	13,4	15,5	22,0
Beam width	(mm)	89-305	89-305	89-305	89-305
A	(mm)	144	144	144	144
B	(mm)	102	102	118	114
D	(mm)	107	107	122	119
E	(mm)	25,4	25,4	25,4	25,4
G max	(mm)	418	418	418	426
H	(mm)	20	25	25	32
J	(mm)	100	100	115	106
K min	(mm)	322	330	346	355
L	(mm)	409	409	409	409



BALKKLÄMMA/BEAM CLAMP - Model 1HDC Typ SF(X) - Fixerad Gripklo / Fixed Jaw

Model 1HDC		3000SF	3000SFX	4000SF	5000SF	5000SFX	6000SF	10 000SF	15 000SF	15 000SFX
WLL	(kg)	3000	3000	4000	5000	5000	6000	10 000	15 000	15 000
Test load	(kg)	4500	4500	6000	7500	7500	9000	15 000	22 500	22 500
Weight	(kg)	8,0	11,5	11,0	15,0	10,0	18,8	28,0	47,0	52,8
Jaw Opening	(mm)	76-190	127-350	150-254	150-305	90-190	203-457	203-457	203-457	406-610
A	(mm)	130	130	130	140	130	140	140	175	175
C	(mm)	27	27	46	46	46	55	55	76	76
D	(mm)	107	107	107	122	122	116	119	120	120
E max	(mm)	272	432	400	450	340	600	600	681	834
G	(mm)	276	401	409	409	339	559	559	660	810
H	(mm)	20	20	25	25	25	25	32	40	40
J	(mm)	85	85	83	99	99	99	99	185	185
K min	(mm)	254	296	303	319	330	418	418	555	634



# Skruvklämma Screw Clamp

## Skruvklämma/Screw Clamp – SBBE

2000, 4000 kg

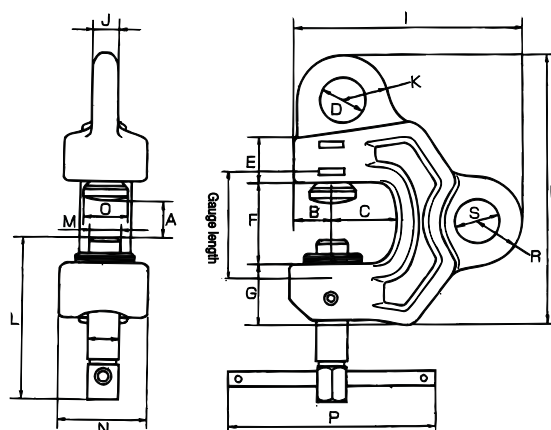
- Skruvklämman är speciellt användbar för vertikala/horizontella, rotation och transport av stålplåtar, balkar och stålkonstruktioner m.m.
  - Endast för användning på stålplåt
  - Funktionssäker
  - Märklinje bekräftar klämning
  - Tillverkad av speciellt legerat stål
  - Egna tillverkningsnr samt provbelastade
  - Test och CE-certifikat medföljer
- The screw clamp offers many possible applications. It is particularly useful for lifting, turning and pulling steel plates, girders and steel constructions
  - Only for use on steelplate
  - Reliable
  - Market line confirms pinching
  - Made of special alloy steel
  - Marked with its own manufacturing number and load tested
  - Test and CE-certificate enclosed



”Skruvklämman som är speciellt utvecklad för lyft, drag, transport och upphängning”

BALKKLÄMMA/EAGLE CLAMP - Model SBBE

Model		1SBBE-2	1SBBE-4
WLL	(kg)	2000	4000
Weight	(kg)	4,0	8,8
Jaw Opening	(mm)	0-40	5-35
A (Thickness)	(mm)	1-40	5-35
B	(mm)	27,5	37,5
C	(mm)	46	47,5
D	(mm)	32	48
E	(mm)	31,5	38,5
G	(mm)	45	59
H	(mm)	202	241,5
I	(mm)	165,5	183,5
J	(mm)	18	28
K	(mm)	34	43,5
L	(mm)	124,3	137,5
M	(mm)	24	36
N	(mm)	60	80
O	(mm)	37	50
P	(mm)	150	200
Q	(mm)	22	30
R	(mm)	34	32
S	(mm)	32	27
Gauge length	(mm)	90	80
Tight torque	(N)	1470	2450



OBS! Skruvklämmorna får inte användas tillsammans med stålprodukter med en hårdhet över 37HRC eller under 8,5 HRC.

NOTE! The Screw Clamps will not be used together with steel products with a hardness of 37HRC or below 8.5 HRC.

# Kast & Brytblock Snatch & Pulley Block



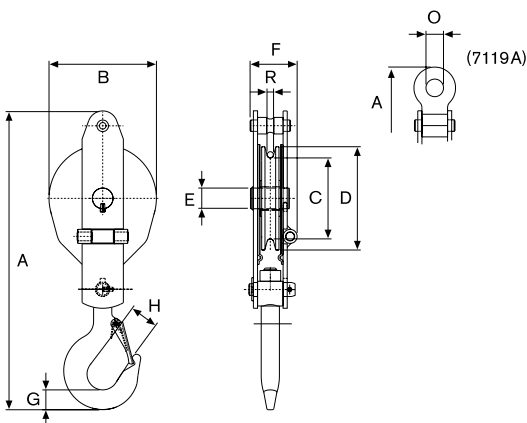
## Kastblock/Snatch Block – 71

500, 1000, 2000, 3000, 5000 kg

- Öppningsbart för enkel montering av linan
- Automatisk låsning när kroken vrides till normaläge, utan lösa delar
- Svarvad linskiva med glidlager
- Egna tillverkningsnr samt provbelastade
- Test och CE-certifikat medföljer
- Easy rope fitting – turn the suspension hook to open and place the rope
- Automatic locking when the hook is in its normal position. No loose parts
- Cast iron pulley with slide bearing type Glycodur
- Marked with its own manufacturing number and is load tested
- Test and CE-certificate enclosed

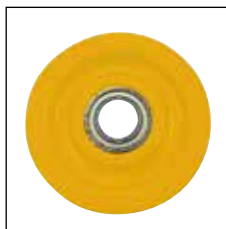
56  
.....

”Öppningsbart för enkel montering av linan”



Linhjul/Pulley

Linhjul med kullager/  
Pulley with ball bearing



### KASTBLOCK/SNATCH BLOCK - 71

Model	7112A	7114A	7116A	7117A	7119A
WLL (kg)	500	1000	2000	3000	5000
Weight (kg)	2,0	3,6	6,1	11,8	21,0
A (mm)	285	357	420	485	685
B (mm)	104	130	157	205	284
ØC (mm)	78	98	118	160	225
ØD (mm)	100	125	150	200	275
ØE (mm)	20	25	30	35	40
F (mm)	49	56	64	71	89
G (mm)	17	24	32	39	48
H (mm)	30	35	49	48	45
ØO (mm)	-	-	-	-	35
ØR (mm)	7	8	10	12	15

### RESERVDELAR/SPAREPARTS

Model	7112A	7114A	7116A	7117A	7119A
Pulley	7112110A	7114110A	7116110A	7117110A	7119110A
Pulley ball bear.	7112115A	7114115A	7116115A	7117115A	7119115A

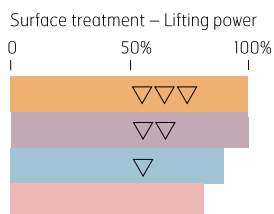
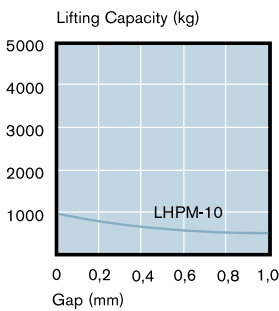
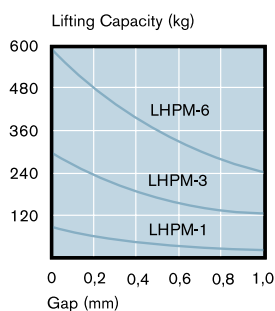
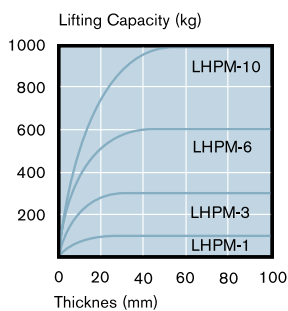
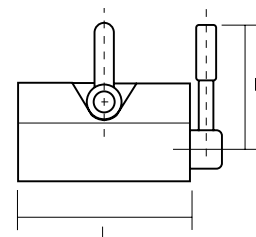
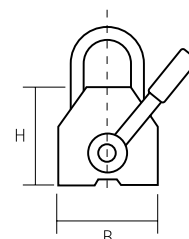
# Lyftmagnet Magnetic Lifter

## Lyftmagnet/Magnetic Lifter – 250

100, 300, 600, 1000 kg

- Enkel in- och urkoppling med manuell spak
- Ett enkelt och ekonomiskt sätt att ansluta belastningar under lyftning och hantering
- Används t.ex. för flyttning av plåt, järnblock, cylindriska och andra magnetiska material
- Låg vikt och lätt att använda
- För lyft i industrier, hamnar, lager m.m.
- Kompletterad med toppschackel och V-spår i basen
- Egna tillverknings nr och provbelastade
- Test och CE-certifikat medföljer

- Manually operated ON/OFF switch with safety base
- Widely used for lifting and transporting flat and round steel loads, eliminating the need for slings, clamps or other holding devices
- Low weight and easy to use
- For lifting in industries, harbours, storages and for transportation
- V-slot on base of holding face enables lifting of both cylinders and sheets
- Marked with its own manufacturing number and load tested
- Test and CE-certificate enclosed



Handtag/Handle

### LYFTMAGNET/MAGNETIC LIFTER - 250

Model	801001	801003	801006	801010
Rating lifting capacity (kg)	100	300	600	1000
Cylindrical lifting cap. (kg)	30	100	200	300
Breakaway max (kg)	350	1050	2100	3500
Weight (kg)	3,0	10,0	24,0	50,0
L (mm)	92	162	232	258
B (mm)	62	92	122	176
H (mm)	67	91	117	163
R (mm)	126	150	196	284

### RESERVDELAR/SPARE PARTS

Model	801001	801003	801006	801010
Handle	801001-01	801003-01	801006-01	801010-01

iXTUR®



## Lyftmagnet, elektrisk/ Magnetic Lifter, electric – 255

120 kg

- Helautomatisk
  - Liten och kompakt konstruktion
  - Inbyggt och laddningsbart batteri
  - Flexibel och användarvänlig
  - Fler än tusen lyft på en laddning
  - Låg energiförbrukning
  - Levereras med laddare i praktisk stabil koffert
- Electrically controlled lifting
  - Compact design
  - Flexible and user-friendly device for professional use
  - Over thousand lifts with one complete battery charge
  - Low energy consumption
  - Compactly integrated package with chargeable battery

”Lång användartid medger  
effektivt arbete utan avbrott”



LYFTMAGNET, elektrisk/  
MAGNETIC LIFTER, electric – 255

Model	255120
Rating lifting cap. (kg)	120
Breakaway max (kg)	360
Weight (kg)	6,50
Length (mm)	125
Width (mm)	125
Height (mm)	120





# ***Elektrisk telfer***

## ***Electric Chain Hoist***



60

.....

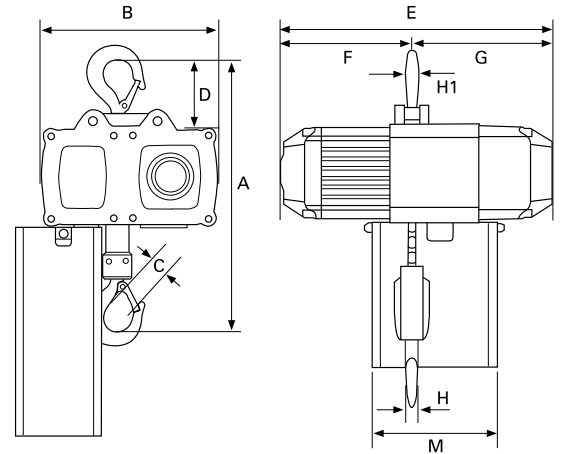
1-Part/1-Fall

2-Part/2-Falls

# Eltelfer/Electrical Chain Hoist – YA

250, 500, 1000, 2000 kg

- Robust och kompakt konstruktion
  - 2 lyfthastigheter
  - Slirkoppling vid överbelastning
  - Gränslägesbrytare för övre och nedre krokkläge
  - Sätthärdade och oljesmorda kugghjul ger låg ljudnivå och driftsäker gång
  - Damm- och fuktskyddad telfer enligt IP 55
  - 42 V Manöverspänning - Manöverdon IP 65
  - Driftspänn. 3-fas 380-400 V, 50Hz
- Robust and compact construction
  - Slip clutch to prevent overload
  - 2 speed lifting
  - Integrated limit switch
  - Hardened gearbox with a helical gearing for particularly smooth running
  - Dust- and moisture-proof according to IP 55
  - 42 V Control voltage - Pendant control IP 65
  - Main voltage 3-phase 380-400 V, 50Hz



Dimensioner/Dimensions

Model 1 CPVF	A	B	C	D	E	F	G	H	H1	M
2-8	402	205	30	105	374	215	159	16	16	157
5-8	424	277	29	105	427	208	219	15	15	162
10-4	497	277	35	105	427	208	219	21	21	162
10-8	540	326	35	154	559	285	274	21	21	209
20-4	637	326	40	154	559	285	274	26	26	209

## ELTELFER/ELECTRICAL CHAIN HOIST - YA

Model		1 CPVF 2-8	1 CPVF 5-8	1 CPVF 10-4	1 CPVF 10-8	CPVF 20-4
WLL	(kg)	250	500	1000	1000	2000
Weight	(kg)	25,0	27,0	29,0	59,0	64,0
Standard lift	(m)	3,0	3,0	3,0	3,0	3,0
Lift speed	(m/min)	8/2	8/2	4/1	8/2	4/1
Chain falls	(falls)	1	1	2	1	2
Load chain	(Art no)	9020109	9020110	9020110	9020111	9020111
Load chain	(Ø mm)	4 x 12,2	5 x 15,1	5 x 15,1	7,1 x 20,5	7,1 x 20,5
Effect	(kW)	0,37 / 0,09	0,75 / 0,18	0,75 / 0,18	1,5 / 0,37	1,5 / 0,37
ED	(%)	33/17	33/17	33/17	33/17	33/17
FEM group		1 Am	1 Am	1 Am	1 Am	1 Am

## RESERVDLAR/SPARE PARTS

OBS! Alla modeller kan fås med valfri längd på kätting.  
NOTE! All models can be delivered with optional length of chain.

Model	1 CPVF 2-8	1 CPVF 5-8	1 CPVF 10-4	1 CPVF 10-8	CPVF 20-4
Hook Suspension	On request	On request	On request	On request	On request
Bottom Hook 1-fall	00670128	00670133	-	00670256	-
Bottom hook 2-fall	-	-	00670194	-	00670260
Pendant Control	00670312	00670312	00670312	00670312	00670312
Chain Bag	06900043	06900003	06900003	06900006	06900006



Upphängningskrok  
Hook Suspension



Lastkrok (1 part)  
Bottom Hook (1 fall)



Lastkrok (2 part)  
Bottom Hook (2 fall)



Manöverdon  
Pendant Control



Kättingsamlare  
Chain Bag

# Elektrisk telfer

## Electric Chain Hoist



### Eltelfer/Electrical Chain Hoist – ABK Mini

125, 250 kg

- Kompakt och låg konstruktion
  - Slirkoppling mot överbelastning
  - Damm och fuktskyddad enligt IP 55
  - Manöverdon med nödstopp
  - Driftspänning 3-fas 400V, 50Hz
  - Test och CE-certifikat medföljer
- Handy hoist of reduced dimensions
  - Compact design and low weight
  - Pendant with emergency stop
  - Direct control
  - Main voltage three-phase 400 V, 50Hz
  - Test and CE-certificate enclosed



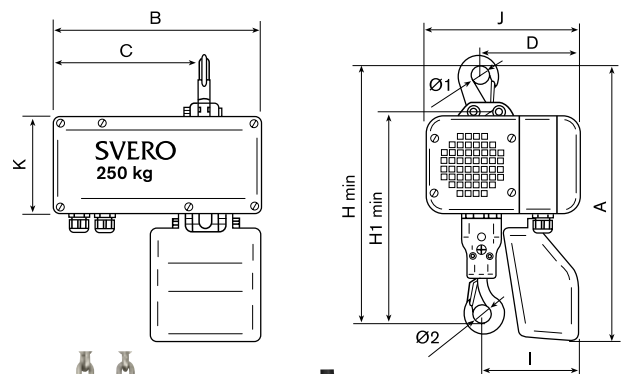
Användarvänligt manöverdon med nödstopp.



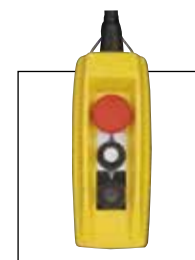
Pendant Control easy to use with emergency stop.

#### ELTELFER/ELECTRICAL CHAIN HOIST - ABK MINI

Model		ABK Mini-128 D	ABK Mini-254 D
WLL	(kg)	125	250
Weight	(kg)	17,0	19,0
Standard lift	(m)	3	3
Lift speed	(m/min)	8/2	4/1
Speed		2-speed	2-speed
Chain/falls	(mm)	4,0 x 12,0/1	4,0 x 12,0/2
Effect	(kW)	0,18-0,05	0,18-0,05
FEM group		M4	M4
A	(mm)	350	350
B	(mm)	280	280
C	(mm)	204	204
D	(mm)	121	136
I	(mm)	111	127
J	(mm)	213	213
K	(mm)	133	133
H	(mm)	332	352
H1	(mm)	269	289



Lastkrok  
Bottom Hook



Manöverdon  
Pendant Control

#### RESERVDELAR/SPARE PARTS

Model		ABK Mini-128 D	ABK Mini-254 D
Bottom Hook		1ABK-65	1ABK-66
Pendant Control		1ABK-20	1ABK-20



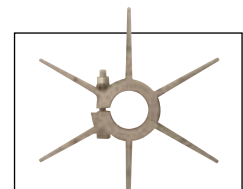
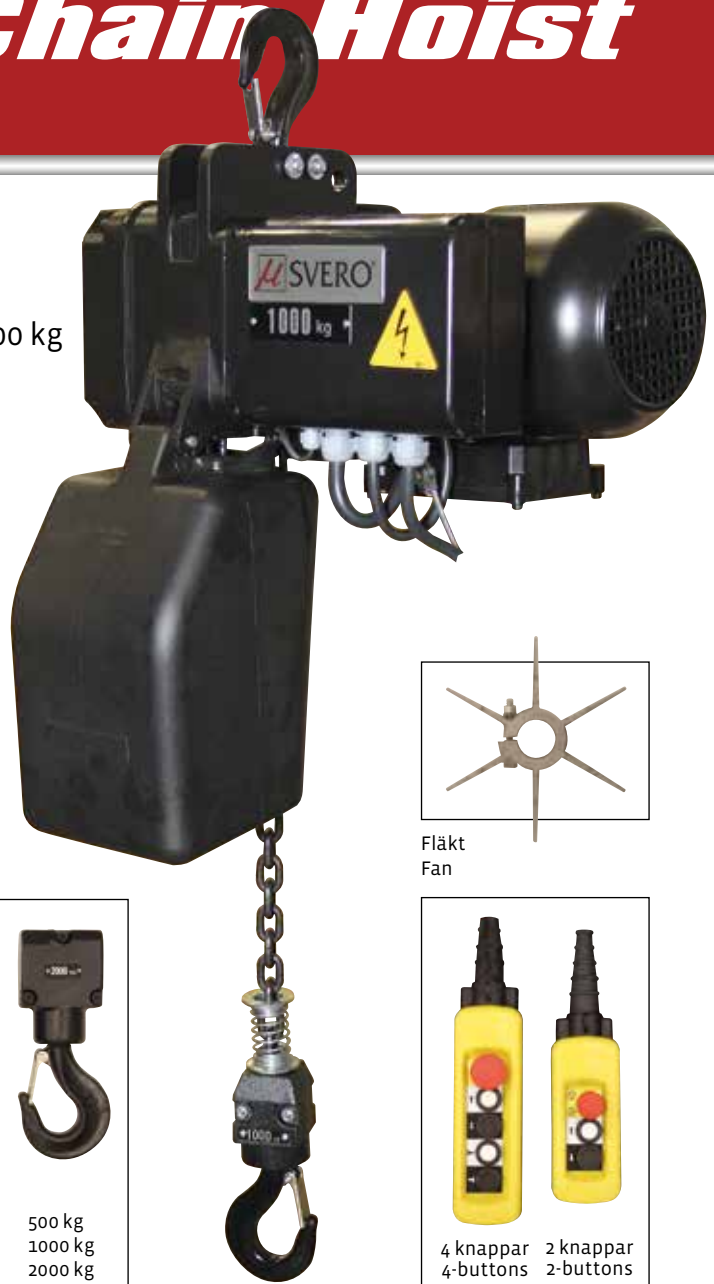
# Elektrisk telfer

## Electric Chain Hoist

### Eltelfer/Chain Hoist – 1 ABK

250, 500, 1000, 1600, 2000, 2500, 3200, 4000, 5000 kg

- Kompakt och lågbyggd konstruktion
  - Gränslägesbrytare
  - Driftspänning 230/400V 3-fas
  - Långtidsbroms
  - Motor i isolationsklass F, IP 55
  - Manöverdon med nödstopp
  - Fabrikstestad med 25% överlast
- Lightweight aluminium alloy body
  - Upper- and lower limits switch standard
  - 230/400 3-Phase
  - High efficiency load limiter, bathed in oil
  - Insulation class F, protection IP 55
  - Accessible control box
  - Pendant with emergency stop button
  - Factory tested with 25 % overload



Fläkt  
Fan

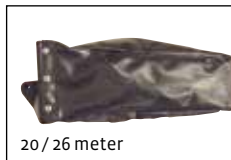


4 knappar  
4-buttons  
2 knappar  
2-buttons



8 / 14 meter

Kättingsamlare - Plast  
Chain Box - Plastic



20 / 26 meter

Kättingsamlare - Galon  
Chain Box - Galon



Bromsenhet  
Brake Unit



Flätkåpa  
Fan Cover



500 kg  
1000 kg  
2000 kg

Lastkrokar (2 part)  
Bottom Hooks (2 fall)

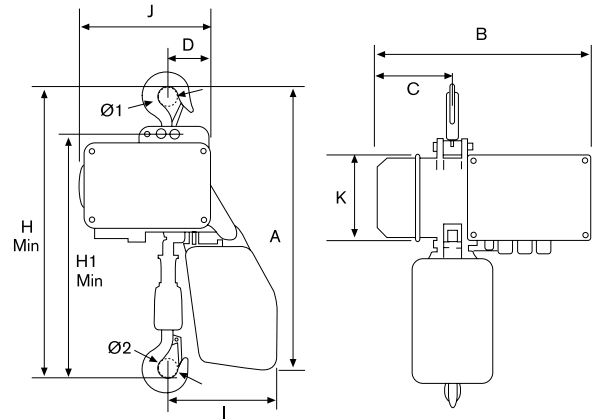
#### RESERVDELAR/SPARE PARTS

Article		250 kg	500 kg	1000 kg	1600 kg	2000 kg	2500 kg	3200 kg	4000 kg	5000 kg
Chain Box, plastic	8 m	1ABK-05	1ABK-05	1ABK-05	1ABK-05	1ABK-05	1ABK-05	-	-	-
Chain Box, plastic	14 m	1ABK-051	1ABK-051	1ABK-051	1ABK-051	1ABK-051	1ABK-051	1ABK-051	1ABK-051	1ABK-051
Chain Bag, galon	20 m	1ABK-052	1ABK-052	1ABK-052	1ABK-052	1ABK-052	1ABK-052	1ABK-052	1ABK-052	1ABK-052
Chain Bag, galon	26 m	1ABK-053	1ABK-053	1ABK-053	1ABK-053	1ABK-053	1ABK-053	1ABK-053	1ABK-053	1ABK-053
Bottom Hook	1 fall	1ABK-60	1ABK-61	1ABK-62	On request	On request	-	-	-	-
Bottom Hook	2-fall	-	1ABK-63	1ABK-64	On request	On request	On request	On request	On request	On request
Pend. Cont. 1-speed - 2 butt.		1ABK-10	1ABK-10	1ABK-10	1ABK-10	1ABK-10	1ABK-10	1ABK-10	1ABK-10	1ABK-10
Pend. Cont. 1-speed - 4 butt.		1ABK-12	1ABK-12	1ABK-12	1ABK-12	1ABK-12	1ABK-12	1ABK-12	1ABK-12	1ABK-12
Pend. Cont. 2-speed - 2 butt.		1ABK-13	1ABK-13	1ABK-13	1ABK-13	1ABK-13	1ABK-13	1ABK-13	1ABK-13	1ABK-13
Pend. Cont. 2-speed - 4 butt.		1ABK-14	1ABK-14	1ABK-14	1ABK-14	1ABK-14	1ABK-14	1ABK-14	1ABK-14	1ABK-14
Brake Unit		On request	On request	On request	On request	On request	On request	On request	On request	On request
Fan Cover		On request	On request	On request	On request	On request	On request	On request	On request	On request
Fan		On request	On request	On request	On request	On request	On request	On request	On request	On request



Dimensioner/Dimensions

Model (WLL)	A	B	C	D	H	I	J	K
250	511	387	138	78	451	197	239	154
500	511	387	138	78	451	197	239	154
1000	509	387	138	95	455	206	266	164
1600	591	438	136	139	610	240	291	184
2000	591	438	136	139	610	240	292	184
2500	626	483	148	181	651	305	344	216
3200	626	485	148	181	651	305	344	216
4000	658	485	148	181	651	305	304	216
5000	658	485	148	181	732	305	344	216



ELTELFER/ELECTRICAL CHAIN HOIST - 1 ABK

1-FAS / 1 - Phase 230 V

WLL (kg)	Model	F.E.M	Lift Speed (m/min)	Chain Ø (mm)	Falls	Motor (kW)	Weight (kg)
250 (1-speed)	ABK 051-208 M	M3	8	5,0 x 15,0	1	0,37	28
500 (1-speed)	ABK 051-504 M	M3	4	5,0 x 15,0	1	0,37	30
500 (1-speed)	ABK 101-508 M	M3	8	5,0 x 15,0	1	0,75	34
1000 (1-speed)	ABK 101-1004 M	M3	4	7,0 x 21,0	1	0,75	36
1000 (1-speed)	ABK 201-1006 M	M3	6	7,0 x 21,0	1	1,1	43
1600 (1-speed)	ABK 201-1603 M	M3	3	7,0 x 21,0	2	1,1	48
2000 (1-speed)	ABK 201-2003 M	M3	3	7,0 x 21,0	2	1,1	48

ELTELFER/ELECTRICAL CHAIN HOIST - 1 ABK

3-FAS / 3 - Phase 230-400 V

WLL (kg)	Model	F.E.M	Lift Speed (m/min)	Chain Ø (mm)	Falls	Motor (kW)	Weight (kg)
250 (1-speed)	ABK 051-208 U	M4	8	5,0 x 15,0	1	0,37	28
250 (2-speed)	ABK 051-208 D	M4	8/2	5,0 x 15,0	1	0,37 / 0,10	30
500 (1-speed)	ABK 051-506 U	M4	6	5,0 x 15,0	1	0,55	29
500 (2-speed)	ABK 051-504 D	M4	4/1	5,0 x 15,0	2	0,37 / 0,10	32
500 (1-speed)	ABK 101-508 U	M4	8	5,0 x 15,0	1	0,75	34
500 (2-speed)	ABK 101-508 D	M4	8/2	5,0 x 15,0	1	0,7 / 0,17	39
1000 (1-speed)	ABK 051-1003 U	M4	3	5,0 x 15,0	2	0,55	31
1000 (1-speed)	ABK 101-1004 U	M4	4	7,0 x 21,0	1	0,75	36
1000 (2-speed)	ABK 101-1004 D	M4	4/1	5,0 x 15,0	2	0,7 / 0,17	39
1000 (1-speed)	ABK 201-1008 U	M4	8	7,0 x 21,0	1	1,5	43
1000 (2-speed)	ABK 201-1008 D	M4	8/2	7,0 x 21,0	1	1,5 / 0,37	47
1600 (1-speed)	ABK 201-1604 U	M5	4	7,0 x 21,0	2	1,5	48
1600 (2-speed)	ABK 201-1604 D	M4	4/1	7,0 x 21,0	2	1,5 / 0,37	52
1600 (1-speed)	ABK 3-1606 U	M3	6	8,0 x 24,0	1	2,2	73
1600 (2-speed)	ABK 3-1606 D	M3	5/1,25	8,0 x 24,0	1	1,8 / 0,45	83
2000 (1-speed)	ABK 201-2004 U	M4	4	7,0 x 21,0	2	1,5	48
2000 (2-speed)	ABK 201-2004 D	M4	4/1	7,0 x 21,0	2	1,5 / 0,37	52
2000 (1-speed)	ABK 3-2005 U	M5	5	10,0 x 28,0	1	2,2	73
2000 (2-speed)	ABK 3-2005 D	M3	5/1,25	10,0 x 28,0	1	1,8 / 0,45	83
2500 (1-speed)	ABK 3-2504 U	M3	4	10,0 x 28,0	2	2,2	73
2500 (2-speed)	ABK 3-2503 D	M3	3,2/0,8	8,0 x 24,0	2	1,8 / 0,45	86
3200 (1-speed)	ABK 3-3203 U	M3	3	8,0 x 24,0	2	2,2	78
3200 (2-speed)	ABK 3-3202 D	M3	2,5/0,6	8,0 x 24,0	2	1,8 / 0,45	86
4000 (1-speed)	ABK 3-4002 U	M5	2,5	10,0 x 28,0	2	2,2	83
4000 (2-speed)	ABK 3-4002 D	M4	2,5/0,6	10,0 x 28,0	2	1,8 / 0,45	93
5000 (1-speed)	ABK 3-5002 D	M3	2	10,0 x 28,0	2	12,2	83

# Elektrisk telfer

## Electric Chain Hoist

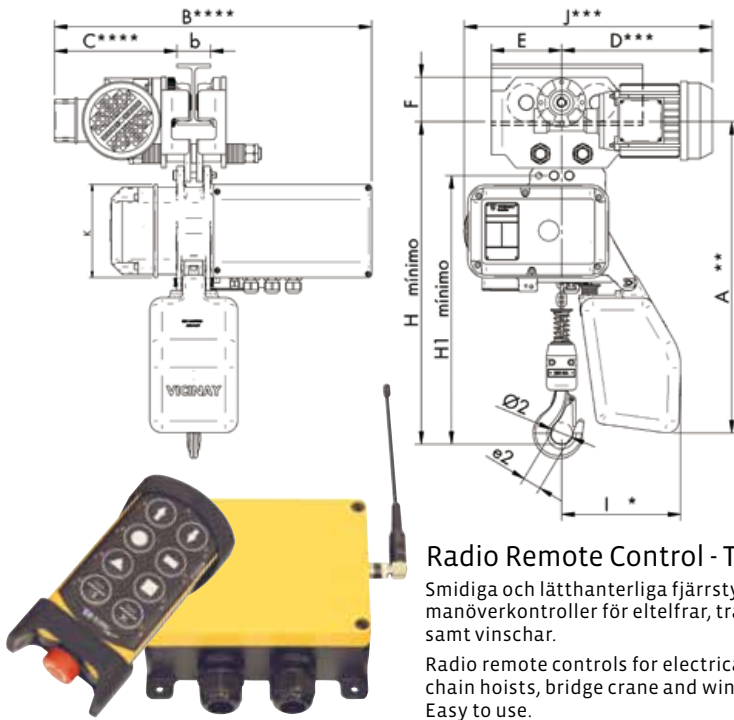
### Eltelfer med elektrisk vagn Chain Hoist with electric Trolley

250, 500, 1000, 1600, 2000, 2500, 3200,  
4000, 5000 kg

- Kompakt och lågbyggd konstruktion
  - Slirkoppling mot överbelastning
  - Driftspänning 230/400V 3-fas
  - Långtidsbroms
  - Motor i isolationsklass F
  - Manöverdon med nödstopp
  - Fabrikstestad med 25% överlast
  - Gränsbrytare standard upp till 2 ton
- 
- Lightweight aluminium alloy body
  - Failsafe motor brake
  - 230/400 3-Phase
  - High efficiency load limiter, bathed in oil
  - Insulation class F, protection IP 55
  - Accessible control box
  - Pendant with emergency stop button
  - Factory tested with 25 % overload
  - Upper and lower limits switch standard up to 2000 kg



”Kompakt  
och lågbyggd.  
Kan levereras  
komplett med  
strömbana och  
radiostyrning”



**Radio Remote Control - Tiger**

Smidiga och lätthanterliga fjärrstyrda manöverkontroller för eltelfrar, traverser samt vinschar.

Radio remote controls for electrical chain hoists, bridge crane and winches. Easy to use.



**TROLLEY SPECIFICATION**

Radio Remote Control - TIGER	
Model TIGER-System	Art no
Hoist / Hoist with Trolley, 2-way, 2-speed	100050
Bridge Crane, 3-way, 2 speed	100051

WLL (kg)	Travel speed (20 m/min) Motor kW	Travel speed (20/5 m/min) Motor kW	Standard width of beam (mm)	Min radius (m)
250 - 1000	0,18	0,18 / 0,045	55-113 / 119-170	1,0
1600 - 2000	0,18	0,18 / 0,045	64-120 / 125-170	1,2
2500 - 5000	0,55	0,37 / 0,1	82-143 / 149-200	1,8

**Dimensioner/Dimensions**

**3-FAS / 3 - Phase 230-400 V**

WLL (kg)	Model	A**	B****	C****	D	E	F	H	I*	J***	K
250 (1-speed)	ABK 051-208 U	514	497 + b/2	203	249	116	74	455	197	410	154
250 (2-speed)	ABK 051-208 D	514	497 + b/2	203	249	116	74	455	197	409	154
500 (2-speed)	ABK 051-504 D	514	497 + b/2	203	249	116	74	476	222	384	154
500 (1-speed)	ABK 101-506 U	514	497 + b/2	203	249	116	74	455	197	410	154
500 (1-speed)	ABK 101-508 U	512	497 + b/2	203	249	116	74	453	197	430	164
500 (2-speed)	ABK 101-508 D	512	497 + b/2	203	249	116	74	453	197	427	164
1000 (1-speed)	ABK 051-1003 U	514	497 + b/2	203	249	116	74	476	222	385	154
1000 (1-speed)	ABK 101-1004 U	512	497 + b/2	203	249	116	74	459	206	421	164
1000 (2-speed)	ABK 101-1004 D	512	497 + b/2	203	249	116	74	474	222	402	164
1000 (1-speed)	ABK 201-1008 U	541	508 + b/2	203	249	116	74	481	206	435	184
1000 (2-speed)	ABK 201-1008 D	541	508 + b/2	203	249	116	74	481	206	434	184
1600 (1-speed)	ABK 201-1604 U	562	509 + b/2	204	249	138	90	582	240	402	184
1600 (2-speed)	ABK 201-1604 D	562	509 + b/2	204	249	138	90	582	240	401	184
1600 (1-speed)	ABK 1606 U	600	554 + b/2	217	282	139	82	550	260	492	216
1600 (2-speed)	ABK 1606 D	600	632 + b/2	217	282	139	82	550	260	492	216
2000 (1-speed)	ABK 201-2004 U	562	509 + b/2	204	249	138	90	582	240	402	184
2000 (2-speed)	ABK 201-2004 D	562	509 + b/2	204	249	138	90	582	240	401	184
2000 (1-speed)	ABK 3-2005 U	600	534 + b/2	217	282	139	82	550	260	492	216
2000 (2-speed)	ABK 3-2005 D	600	632 + b/2	217	282	139	82	550	260	492	216
2500 (1-speed)	ABK 3-2504 U	605	579 + b/2	242	287	216	121	560	260	503	216
2500 (2-speed)	ABK 3-2503 D	610	657 + b/2	242	287	216	121	630	290	503	216
3200 (1-speed)	ABK 3-3203 U	610	579 + b/2	242	287	216	121	620	290	503	216
3200 (2-speed)	ABK 3-3202 D	610	657 + b/2	242	27	216	121	620	290	503	216
4000 (1-speed)	ABK 3-4002 U	610	579 + b/2	242	27	216	121	680	290	503	216
4000 (2-speed)	ABK 3-4002 D	610	657 + b/2	242	27	216	121	680	290	503	216
5000 (1-speed)	ABK 3-5002 U	610	579 + b/2	242	27	216	121	680	290	503	216

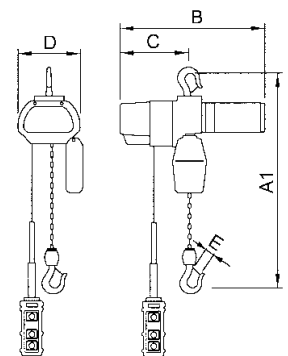
# Elektrisk telfer

## Electric Chain Hoist

### Eltelfer/Chain Hoist – 1ED

60, 100, 160, 180 kg

- Liten, kompakt och med låg egenvikt
- Lyfter snabbt
- 2 lyfthastigheter
- Högkvalitativ mekanisk broms
- Överbelastningsskydd i form av friktionskoppling samt övre elektriskt gränsläge.
- Utrustad med kättingsamlare
- Driftspänning 230V
- Lifts quickly
- 2 lifting speeds
- High-quality mechanical brake
- Small, compact with low weight
- Overload protection in the form of friction clutch and upper electrical limit switch.
- Equipped with chain box
- Operating Voltage 230V



#### ELTELFER/ELECTRICAL CHAIN HOIST - 1ED

Model		1ED06S	1ED10S	1ED16S	1ED18S
WLL (kg)		60	100	160	180
Weight (kg)		11,5	11,5	15,5	11,5
Standard lift (m)		3,0	3,0	3,0	3,0
Lift speed (m/min)		20,1	12,5	19,2	7,7
Chain falls (falls)		1	1	1	1
Load chain (Ø mm)		4,0 x 12,0	4,0 x 12,0	4,0 x 12,0	4,0 x 12,0
Effect (kW)		0,3	0,3	0,3	0,3
FEM group		1Am	1Am	1Am	1Am

#### Dimensioner/Dimensions

Model (WLL)	A1	B	C	D	G	Flange width
60	315	434	257	165	27	50 - 100
100	315	434	257	165	27	50 - 100
160	330	434	257	165	27	50 - 100
180	315	434	257	165	27	50 - 100

Större lyftkapacitet offereras / Other lifting capacities can be offered



# ***Lufttelfer***

## ***Air Chain Hoist***

### Lufttelfer/Air Chain Hoist – TCR

250 500, 1000, 2000, 3000, 6000 kg

- Kompakt konstruktion
- Lättmanövrerad
- Steglös manövrering
- Inbyggt bromssystem
- Överlastskydd
- Styrning via tryckknapp och kabel
- Lufttryck 0,4 - 0,63 MPa
- Ljuddämpning
- Test and CE-certificate enclosed

- Compact design
- Easy to control
- Continuous operation
- Built-in brake system
- Overload Protection
- Control via push button and cable
- Air pressure 0.4-0.63 MPa
- Silencing
- Test and CE-certificate enclosed

 **red rooster**





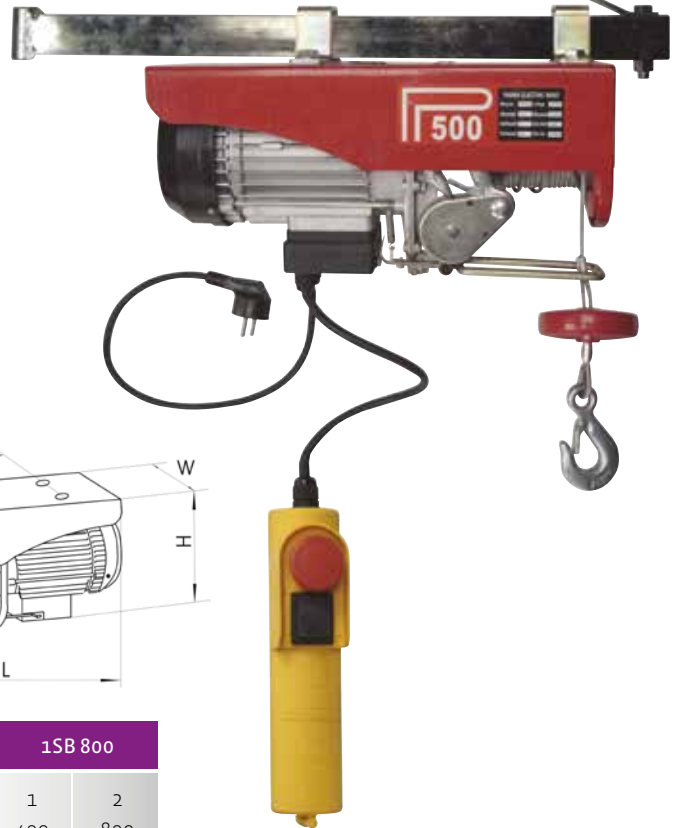
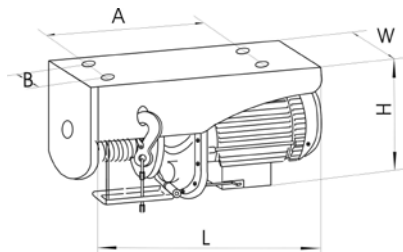
# Elvinschar

## Electric winches

### Elektrisk vinsch/Electric winch – 1SB

250, 500, 800 kg

- För dragning eller lyft
  - Manöverdon med nödstopp (kabel 1,8 m)
  - 220V
  - IP-klass 54
  - Levereras med 12 m stålvajer
  - Gränslägesbrytare
  - Godkänd av TÜV Reinland
- For lifting and pulling
  - Pendant control with emergency stop (cable 1,8 m)
  - 220 Voltage
  - Protection class up to IP 54
  - Delivered with 12 m steel wire rope
  - Can be supplied with rotary hoist frame
  - Test and approval by TÜV Reinland



74

#### ELEKTRISK VINSCH/ELECTRIC WINCH - 1SB

Model	1SB 250		1SB 500		1SB 800	
Fall	1	2	1	2	1	2
WLL (kg)	125	250	250	500	400	800
Lifting speed (m/min)	10	5	10	5	10	5
Lifting height (m)	12	6	12	6	12	6
Motor (kW)	0,5		0,9		1,35	
Voltage (V)	230		230		230	
Fuse, time-dealy (A)	10		10		10	
Wire Ø (mm)	3,0		4,2		5,1	
Weight (kg)	10		15		37	
A (mm)	215		220		230	
B (mm)	90		100		100	
H (mm)	150		178		178	
L (mm)	340		390		410	
W (mm)	135		147		147	
<b>OPTIONS</b>						
Rotary frame Art no	1SBA250		1SBA500		-	
Length (mm)	1100		750		-	
Weight (kg)	7,5		5,5		-	



Lastkrok 2-part/Hook 2-fall



Manöverkontroll/Pendant Control

#### RESERVDLAR/SPARE PARTS

Model	1SB 250	1SB 500	1SB 800
Pendant Control	1SB250-10	1SB500-10	1SB800-10
Hook 2-fall	1SB250-15	1SB500-15	1SB800-15